



CLIVEPEARCE
Now you're moving

2 Bedrooms

Cottage - Terraced

Guide Price

£150,000

Located in

Truro



www.clivepearceproperty.com



Fore Street

Truro | Cornwall | TR2 4QP



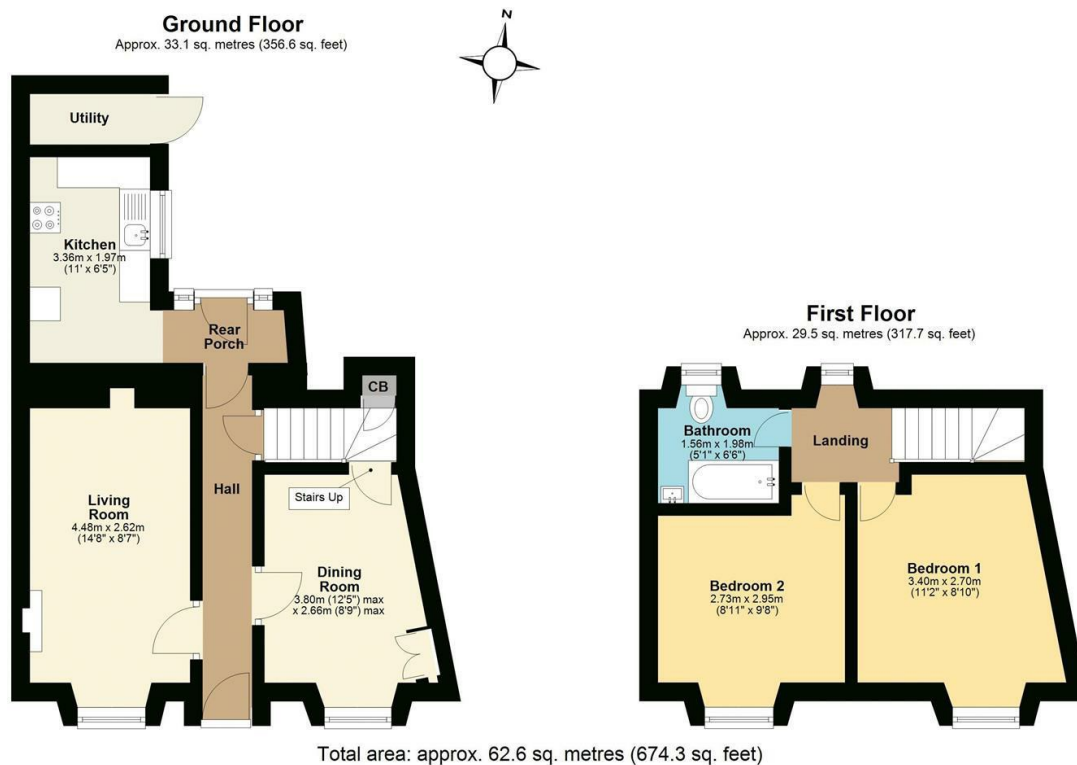
An extended Grade II Listed two bedroom character cottage in need of updating, conveniently located in the popular village of Grampound between Truro and St. Austell. Delightful sunny rear garden and close to on street parking.

Fore Street

£150,000 Freehold



- Two bedroom character cottage
- In need of updating / renovation
- Popular village location
- Nearby on street parking
- Grade II Listed
- No onward chain
- Enclosed sunny garden
- Single glazing



All floor plan dimensions are approximate and provided for illustrative purposes only. While every effort is made to ensure accuracy, measurements may vary, and no guarantee is given regarding their precision. Prospective buyers or tenants should verify all dimensions independently before making any decisions.
Plan produced using PlanUp.

Council Tax Band B

Local Authority

Agents Note: Whilst every care has been taken to prepare these particulars, they are for guidance purposes only. All measurements are approximate and are for general guidance purposes only and whilst every care has been taken to ensure their accuracy, they should not be relied upon and potential buyers/tenants are advised to recheck the measurements.

Energy Efficiency Rating		
	Current	Potential
Very energy efficient - lower running costs		
(92 plus) A		
(81-91) B		
(69-80) C		
(55-68) D		
(39-54) E		
(21-38) F		
(1-20) G		
Not energy efficient - higher running costs		
England & Wales	EU Directive 2002/91/EC	

31 Lemon Street
Truro
Cornwall
TR3 7QB



CLIVEPEARCE
Now you're moving

hello@clivepearceproperty.com

01872 272622

www.clivepearceproperty.com